

▶ ULTRA 100HF

High Powered Portable X-Ray Unit for Veterinary

5kW / 100mA High Output

Ultrasonic SID Sensor with Auto Display

Class 1 Laser Pointer

Compact Mobile Stand

Easy DR Configuration



ECORAY

SPEC.

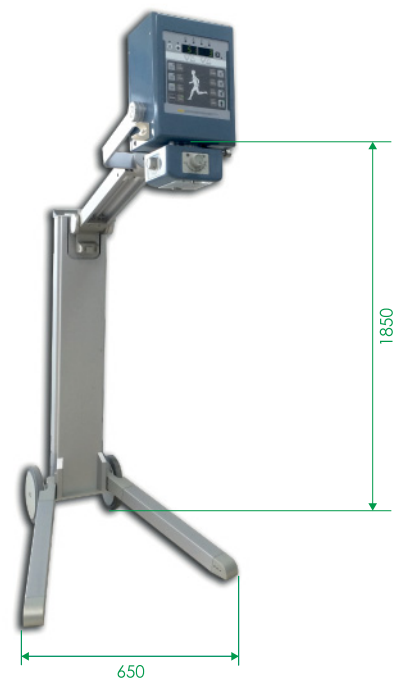


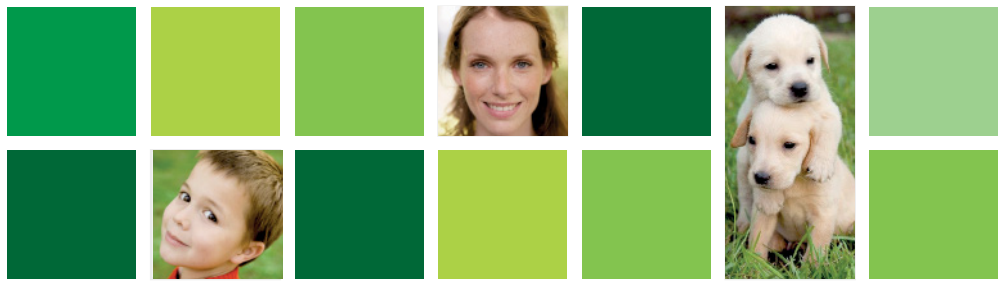
Example Application with Veterinary Table*
[the Table is not provided by EcoRay.]

ITEM	SPECIFICATION
OUTPUT POWER	5.0 kW
LINE VOLTAGE	220VAC, 50/60Hz, Single Phase
FOCAL SPOT	1.8 mm
KV RANGE	40 - 110 kV
mA RANGE	25 - 100 mA
mAs RANGE	0.32 - 200 mAs
Exposure Wait Time	5 sec.
COLLIMATOR	SID Measurement : Ultrasonic Sensor / SID Auto Display Lamp : LED Laser Pointer : Dual Laser, Class 1
PROM MEMORY	128 APR
FILTRATION	Al. equivalent 2.5mm
SIZE	L227 x W203 x H396 mm
WEIGHT	18 kg
MOBILE STAND [OPTION]	Net Weight : Approx. 27 kgs Dimension : Extended 1850 x 950 x 650 mm / Folded 1150 x 342 x 150 mm

Specification is subject to change without prior notice.

Compact Mobile Stand





From Companion Animals To Beloved People.

ULTRA 100 HF

High Powered Portable X-Ray Unit



High Output Power

ULTRA 100HF provides Max. 5kW output power as well as Max. 100 mA range. This conspicuous feature enables users to sufficiently examine even until the thickest body part of human

: ex) Chest Position

Therefore, ULTRA 100HF is the optimized portable X-ray unit from companion animals to beloved people.

Ultrasonic SID Sensor with Auto Display

By contrast with the other products, ULTRA 100HF is equipped with Ultrasonic Sensor providing Max. 250cm SID (Source to Image Distance) measurement with high accuracy of ± 1 cm tolerance. And, the measured SID is automatically displayed on Operation Panel.

Another distinguishing feature of Ultrasonic Sensor is NO Dead Zone (an area unable to be detected). Besides, its power consumption is very low as only 3.1mA.

Non-hazardous Laser Pointer

ULTRA 100HF features the safest Collimator Laser Pointer as Class 1. Of Class 1-4, the bigger number indicates a high level of hazardous influence on human, which is based on International Laser Safety Standards (IEC : 60825-1 Edition 1.2). the Class 1 is defined as "Lasers that are NOT hazardous for continuous viewing or are designed in such a way that prevent human access to laser radiation."

Compact Mobile Stand

ULTRA 100HF can be equipped with the Compact-Designed Mobile stand(Extended : 1850 x 950 x 650 mm / Folded : 1150 x 342 x 150 mm). This Mobile Stand enables users to easily carry.

Easy DR configuration

ULTRA 100HF provides the additional connection port for DR interface. Since the beginning of the development, ULTRA 100HF is elaborately designed for optimal DR system.

Convenient Detector Connection

ULTRA 100HF is directly connected with Detector as AGI box is NOT necessary when being used with a wired-type Detector. It provides users with more convenience.

User-Friendly Operation Panel

ULTRA 100HF's Operation Panel is very carefully designed to efficiently provide users with easy comprehension and control on each function.

In the present, the technology of high powered portable X-ray unit is rapidly becoming equalized on high level.

In this circumstance, ECORAY think it is meaningless of participating in the competition on a cutting-edge technological features.

So, ECORAY change the point of view as the standpoint of users.

Now is the time to need more safe, reliable, and convenient one.

As the result of ECORAY's careful consideration and sincere endeavor,

HERE is ULTRA 100HF.